

See Inside 40 Spectacular Homes that YOU can build

The Nation's Premier Home Designs Magazine

American Dream Homes

40 Beautiful Home Designs

Hundreds of Photos ♦ All Styles and Sizes ♦ Find Your Next Home



**Welcome Summer with
our Outdoor Living Issue!**

- ♦ Designing your outdoor oasis
- ♦ Pools and spas
- ♦ Our favorite products for transforming your backyard into a private resort

Summer 2012
Display until August 7, 2012



Open Up



The streamlined metal roof joins stone accents and wood beams for a simple yet stylish exterior.

This contemporary Prairie home centers around its dramatic two-story great room, grand covered porch and huge view. The superb layout ideally balances privacy and easy socializing. The home features elegantly simple lines, airy sunlight-filled rooms, “bridges” connecting wings, incredible view windows, a private master bedroom garden patio, and beautiful finishes throughout. This design incorporates universal design with a roll-in shower, a step-free garage, three-foot-wide doors, and all core spaces on the ground floor. This home also includes a bonus “Green Specifications” sheet, which details products, systems, construction techniques, and performance standards.



Photos by Philip Wegener, www.philipwegener.com. This home, as shown in the photographs, may differ from the actual blueprints. For more detailed information, please check the floor plans carefully.

Showcase a scenic location with the great room's dazzling wall of windows. From here, step out to the wide back porch.



Plan#: ADH0400008

Style: Craftsman
 Bedrooms: 3
 Bathrooms: 3
 Main Level: 3,083 sq. ft.
 Second Level: 1,035 sq. ft.
 Total: 4,118 sq. ft.
 Width: 150' - 4"
 Depth: 64' - 8"
 Foundation: Crawlspace

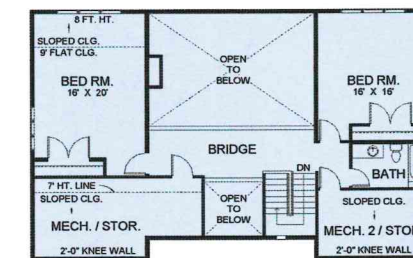
5-SET	8-SET	REPRO	CAD	PDF
\$915	N/A	N/A	\$2,500	\$1,065

Call 1-866-284-2711 or visit one of our websites to learn more about this design.

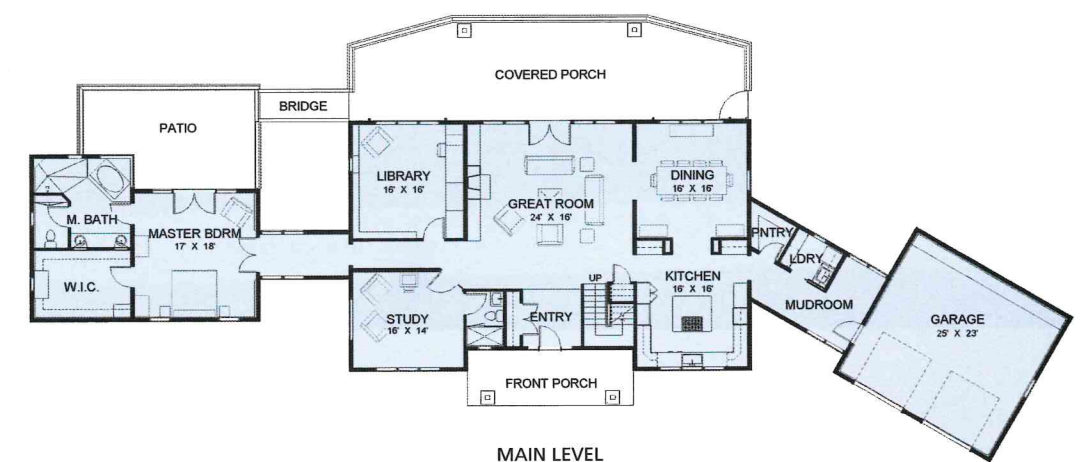
ABOVE: With views of the rear covered porch, the dining room allows a connection with the outdoors even while inside.

TOP RIGHT: The view from the back elaborates on the facade, displaying a wide porch and graceful beams above.

RIGHT: The master bath's tub echoes the angles of the windows above.



SECOND LEVEL



MAIN LEVEL