

SUMMER 2012

HOUSE PLANS FOR SUSTAINABLE LIVING

ecohome

hanley wood

DESIGNS

145

House Plans

Including the
Award-Winning
Energy Saver Plus
Collection

**Build or
Renovate:**
Which is best
for the environment
and you?



ICFs, SIPs...How to read the alphabet
of alternative building systems

20 products for a healthy green home

Display until July 23, 2012

\$9.95 U.S. / Canada



2.1

UNDERSTATED OVERACHIEVER

LOW-KEY ELEGANCE CHARACTERIZES
THIS DECEPTIVELY ECO-FRIENDLY HOME




Strong, clean lines speak to the modern sensibility of this Prairie-style home.

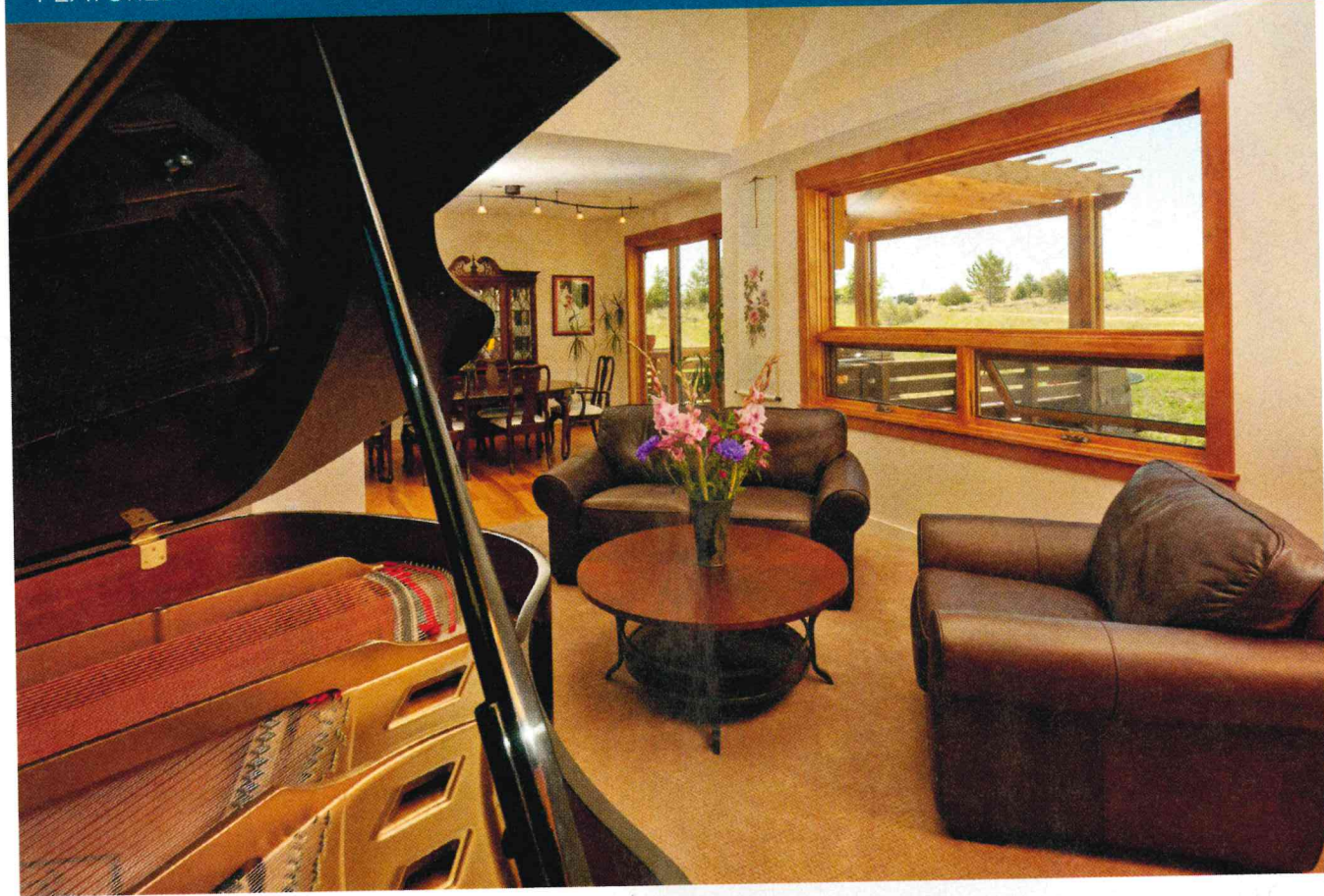


A faux-chimney can be used to house and camouflage an evaporative cooler as well as all mechanical room venting.

This beautifully proportioned contemporary Prairie-style home sits confidently on its site. Strong, clean lines and a simple geometry speak to the modern influence.

Big sunny windows and ample decks connect the open floor plan to the outside, with a large wood trellis on the patio offering protection from the sun. Each of the four bedrooms has its own full bathroom. The main floor is divided into the more formal visitor's side and the casual family wing. Here, the kitchen includes a built-in desk, handy for checking email, and a uniquely shaped island large enough for four people to eat. The ground floor bedroom serves as a great home office, guest, or in-law room. Sun-tubes pour daylight down the grand central stair. On the second floor, a catwalk looks down into the dining room. On one end sit two secondary bedrooms and a bonus room that would make a great study. With plenty of privacy on the other end, the large master has vaulted ceilings, a private balcony, a walk-in closet, and a five piece bath.

When oriented properly, this home is designed to take advantage of passive solar energy, with large windows and properly sized overhangs and shading devices. Roof surfaces are also arranged to hold solar electric panels. This plan is offered with either ICF (insulated concrete form) or conventional 2x6 wall framing. A faux-chimney can be used to house and camouflage an evaporative cooler as well as all mechanical room venting. The plan comes with a bonus "Green Specifications" sheet that helps you make this home extra energy and resource efficient. A full basement/walk-out option is also available. Giant window wells make the basement a sunny, pleasant space. 



ABOVE: Large windows bring in plenty of light to the living room. Beyond, the dining room opens to a shaded patio.

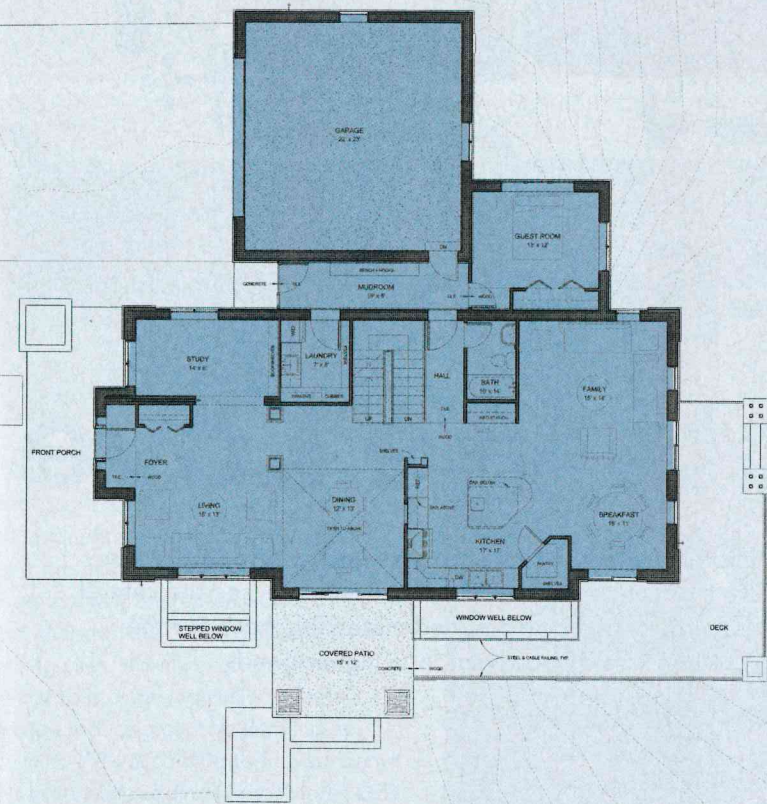
RIGHT: With a kitchen this roomy, there's space to try all kinds of creative cooking.



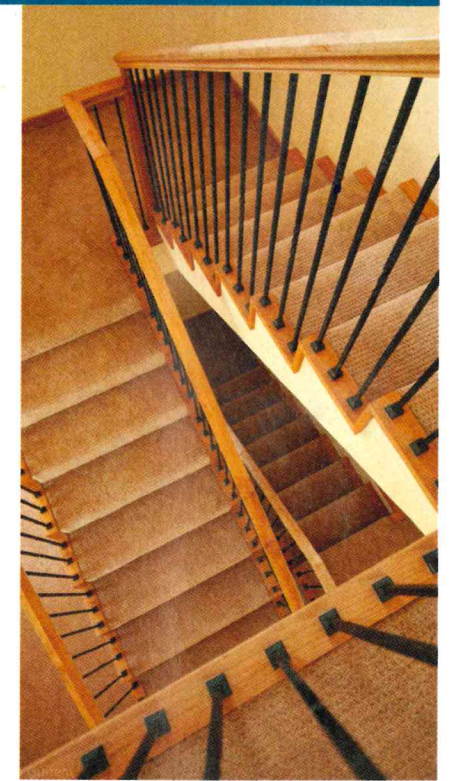
PHOTOS BY BRADEN GUNEM. THIS HOME, AS SHOWN IN THE PHOTOGRAPHS, MAY DIFFER FROM THE ACTUAL BLUEPRINTS. FOR MORE DETAILED INFORMATION, PLEASE CHECK THE FLOOR PLANS CAREFULLY.



SECOND FLOOR



FIRST FLOOR



Follow the staircase down to the daylight basement.

ECO0600139

Square Footage: 5,162

Bedrooms: 4

Bathrooms: 4

Width: 68' - 0"

Depth: 71' - 0"

Foundation: Daylight Basement



5-Set	8-Set	Repro	CAD	PDF
\$915	N/A	N/A	\$2,500	\$1,065



5

BLANCO SOLON compost system We've all heard about the benefits of composting, but who wants to add yet another bin in the kitchen, especially one that has the potential to get a little, well, malodorous? BLANCO's innovative compost system, earner of various design awards, hides 1.8 gallons of organic waste in a container that's set discreetly in your countertop, under a lid that promises to trap odors. It's dishwasher safe, made from recycled stainless steel, and available in a flush-mount or drop-in model. www.blancoamerica.com



7

JADO Stoic Bathroom Collection

Sleek and understated, this new collection of faucets, hand showers, and tub fillers is WaterSense-certified by the EPA. The 1.5 gallon-per-minute faucets offer 32% water savings, the company says, without compromising performance thanks to pressure-compensating aerators. Choose from three finishes to complement your bathroom décor: polished chrome, brushed nickel, or platinum nickel. Complete the look with available accessories, including a robe hook and towel bar. www.americanstandard.com

BamDeck Composite Bamboo Decking Made from 100% recycled materials — 30% bamboo and 70% plastics — this sustainable deck doesn't require any sealing, painting, or refinishing, according to the company, and they claim that it's more than twice as strong as other composite decking. Choose from three colors (caramel, coffee, and slate) and three surface choices (ridged, smooth, or alternating). We like caramel, shown here in the ridged style, for its warmth. www.calibamboo.com

8



Hardscape Lighting by Kichler

Watch your step outside with Design Pro LED lighting fixtures for hardscapes, decks, steps, and benches. According to the maker, the LED lights use 75% less energy than halogen and will last an average of 40,000 hours. The moisture-resistant fixtures are available in three different lengths and six finishes: Textured Architectural Bronze, Bronzed Brass, Copper, Gray, Sand, and Textured White. Professional installation is recommended. www.landscape-lighting.com

6



PHOTO COURTESY OF COKAS DIKO



9

Cokas Diko reclaimed bed from the Hudson collection

Fashioned out of reclaimed wood from old buildings and ships, this bed from the Hudson collection shows off the character of the vintage material with clean, simple lines. Matching pieces include a four-drawer dresser and two-drawer nightstand. www.cokasdiko.com

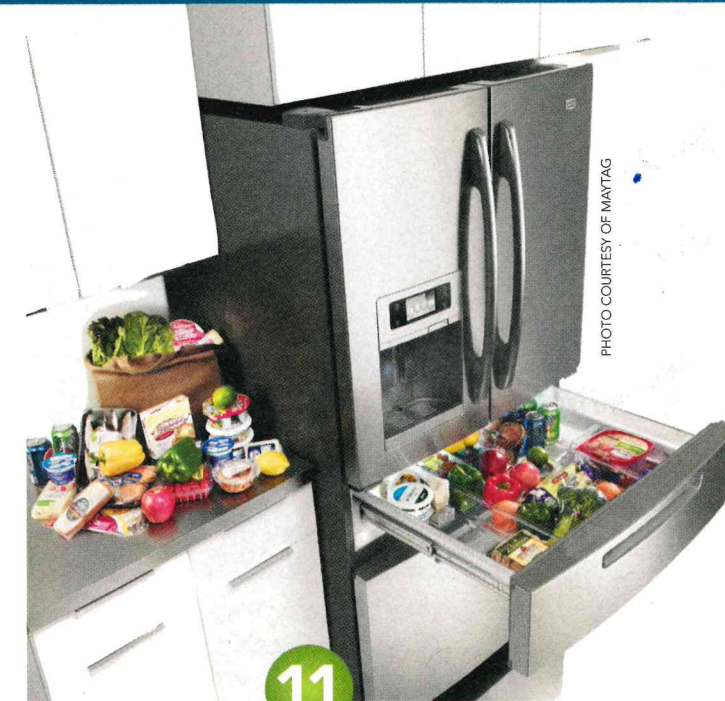


PHOTO COURTESY OF MAYTAG

11

Ice2O Easy Access Refrigerator

Have you ever stood in front of the open refrigerator for too long trying to decide what to eat? This French door refrigerator, proclaimed by the company as the most energy-efficient four door model in the industry, lets even grazers conserve power by accessing a pull-out drawer where you can browse through all your favorites, or even stash 5 bags of groceries, while leaving 80% of the fridge unopened. A useful bonus: the ice maker generates "right size" cubes that are a better fit for water bottles or a smoothie maker than traditional chunks. www.maytag.com

PHOTO COURTESY OF JELD-WEN WINDOWS & DOORS



10

Jeld-Wen reclaimed wood windows

Reclaimed Douglas fir wood that was used for barns, houses, and factories — even snow fencing — lends character to this line of windows and doors. Nail and bolt holes attest to the wood's previous life. Exterior cladding, available in a variety of colors, adds protection. Windows come with a planed finish; for doors, choose from weathered, skip-planed, and planed finishes. www.jeld-wen.com

PHOTO COURTESY OF CALI BAMBOO

Graywater System by Aqua2use

An average family of four can generate up to 40,000 gallons of graywater each year, according to the company — that is, water from your shower, bath, and washing machine that can be used to irrigate your landscaping. The Aqua2use system filters the water to remove lint and impurities, and connects to existing drip and plumbing irrigation systems. Checking with your local water authority for permit requirements is recommended, as is professional installation. www.waterwisegroup.com

12





PHOTO COURTESY OF FIRECLAY TILE

13

100% Recycled Glass Tiles from Fireclay Tile Sourced from old glass found within 20 miles of this San Jose, Calif.-based business, the Crush line of 100% recycled glass tile is made to order within two weeks, in a process that the company describes as using only one-fourth the energy of traditional cast-glass tile. Even kiln heat, water, and manufacturing waste are recycled. The tile comes in 40 colors, 2 finishes, and 17 different size formats. Shown here: Crush 2 x 2 field tile in Speckled Red. www.fireclaytile.com



PHOTO COURTESY OF NORITZ AMERICA

14

Tankless water heater from Noritz The Noritz NCC 199 high-performance tankless water heater, with sleek stainless aesthetics, can be wall-mounted in many environments (such as hidden away in this master bathroom) to ensure limitless hot water for the busy family when and where they need it. Furthermore, the unit can be installed with PVC instead of stainless steel piping, saving money and allowing greater flexibility in placement. www.noritz.com



15

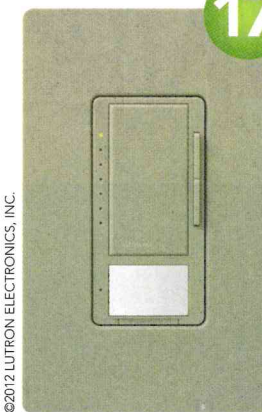
PolyWhey whey-based wood finish Isn't it appropriate that a Vermont-based company would find such an innovative use for whey, a byproduct of cheese making? The whey replaces formaldehyde and other undesirable ingredients in traditional wood finishes, and the maker claims that it has twice the hardness of other water-based finishes. Floor and furniture finishes are available in clear or with your choice of eight tints, while the exterior finish comes in five colors, including Barn Red. www.vermontnaturalcoatings.com



PHOTO COURTESY OF COOPER WIRING DEVICES

16

In-Wall USB charger from Cooper Wiring Devices De-clutter your computer and desk with Cooper Wiring Devices' combination USB charger with tamper resistant receptacle, which the maker says saves energy compared to a traditional phone charger. You can plug in any electronic item that can be charged with a 5V power adapter, and an LED light will let you know it's charging. www.cooperwiringdevices.com



©2012 LUTRON ELECTRONICS, INC.

17

Occupancy/Vacancy sensor from Lutron If you're looking for a lighting product that works without a flick of a switch, Lutron's Maestro occupancy/vacancy sensor automatically turns lights on and off when entering or exiting a room. Built with new technology, the sensor is designed for detecting fine motions so light remains on when the room is occupied. It also works with all bulb types (CFLs, LEDs, etc.) and can perform up to 30 feet from the sensor — perfect for when hands are full. www.lutron.com



18

Geothermal Heat Pump from ClimateMaster Harness the earth's natural heat and cooling power for your home with a geothermal system. The Tranquility 22 Digital Series features a two-stage compressor, ENERGY STAR tier 3 efficiency, variable speed fan, communicating digital controls, and "plug-and-play" functionality, according to the maker. Geothermal heat pumps are eligible for a 30% tax credit with no upper limit. www.climatemaster.com

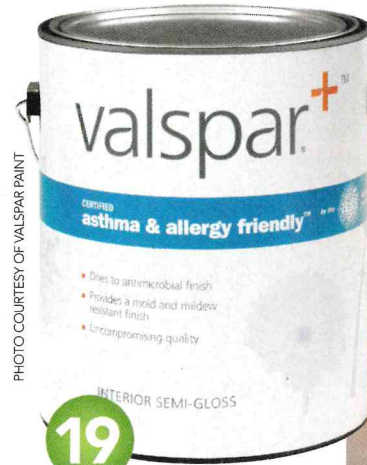


PHOTO COURTESY OF VALSPAR PAINT

19

Asthma/Allergy Friendly Paint from Valspar Valspar+ claims to be the first paint certified by the Asthma and Allergy Foundation of America (AAFA) as asthma & allergy friendly. The zero-VOC product offers an antimicrobial, mold- and mildew-resistant finish, and is available in flat, satin, and semi-gloss. www.valsparpaint.com



20

IceStone Recycled Glass Countertop Made of "100% recycled glass, Portland cement, and pigment," this surface would make a lovely centerpiece as a kitchen counter, bathroom vanity top, or fireplace surround. Choose from 21 colors, including Sage Pearl shown here. www.icestoneusa.com

A ROOM OF ONE'S OWN



For times when you want to bask in the sunshine and times when you want to relax in the shade, the home offers both covered and uncovered outdoor living areas. The covered porch that extends across the back of the home connects to a patio off the master suite.

EVERYTHING HAS ITS PLACE
IN THIS SMART LAYOUT

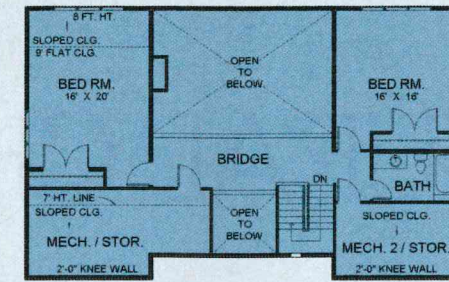


Stone and timber add rustic character to the clean lines of the home.

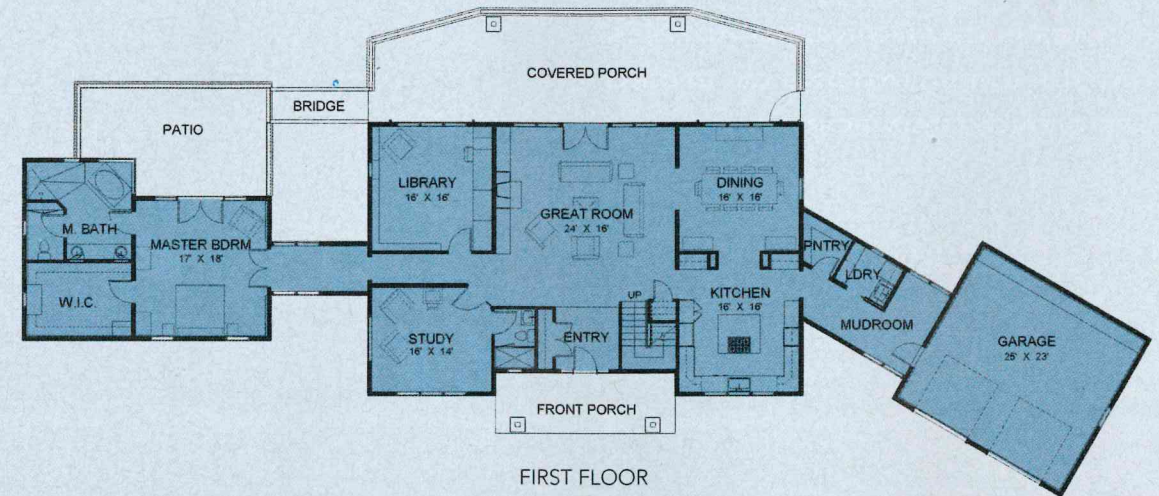
This contemporary Craftsman home centers around its dramatic two-story great room, grand covered porch, and huge view. The smart layout ideally balances privacy and easy socializing, with the master suite located in its own wing on the first floor. Features that facilitate aging in place (as well as making everyday life easier for everyone) include a roll-in shower, a step-free garage, three-foot-wide doors, and the placement of all core spaces on the ground floor. Like the plan on page 12, this home includes a bonus "Green Specifications" sheet, which helps your builder to create an energy-efficient home by detailing products, systems, construction techniques, and performance standards. Other green features include walls of windows that can facilitate passive lighting and heating if sited correctly, an optional solar PV array, an enhanced insulation and window package, and an engineered lumber framing plan. 🌿

RIGHT: Here's a smart idea: follow the example here and add shelves to hold cookbooks in the kitchen, where you'll need them most.

BELOW: Showcase a scenic location with the great room's dazzling wall of windows, which, if oriented correctly, may confer passive solar benefits.



SECOND FLOOR



FIRST FLOOR

PHOTOS BY PHILIP WEGENER, WWW.PHILIPWEGENER.COM. THIS HOME, AS SHOWN IN THE PHOTOGRAPHS, MAY DIFFER FROM THE ACTUAL BLUEPRINTS. FOR MORE DETAILED INFORMATION, PLEASE CHECK THE FLOOR PLANS CAREFULLY.



ECO0600140

Square Footage: 4,118
 Bedrooms: 3
 Bathrooms: 3
 Width: 150' - 4"
 Depth: 64' - 8"
 Foundation: Crawlspc



5-Set	8-Set	Repro	CAD	PDF
\$915	N/A	N/A	\$2,500	\$1,065

The master bath's tub echoes the angles of the windows above.